



PRODUCT DATA SHEET

MapInfo Professional® v12

Location-powered Decision-making
Made Easy

WORK SMARTER, NOT HARDER, WITH THE
PREMIER LOCATION INTELLIGENCE SOLUTION

Product Overview

Data is used every day, and across every enterprise, to make critical strategic decisions that positively impact both business and customers alike. MapInfo Professional v12 and its location intelligence capabilities helps organisations understand their business, analyse trends geographically, and make critical decisions with greater clarity of risk and opportunity.

With MapInfo Professional v12, Pitney Bowes Software makes it even easier to visualise potential, whether it's a crime hotspot or the ideal location for a new bank branch. A Microsoft® Windows®-based mapping application, MapInfo Professional v12 helps business analysts and GIS professionals visualise and share the relationships between data and geography.

MapInfo Professional v12 makes it easier than ever to create great looking maps. With new cartographic output features such as enhanced automatic labelling options, new scalebar enhancements, and greater flexibility over legend and layout objects, making maps that stand out has never been so easy.

With v12, users can also keep up to date with news from the MapInfo world, thought leadership articles, events and new product releases directly within MapInfo Professional. The new reader inside MapInfo Professional will automatically check for and retrieve notifications of important information in the background.

Add on Premium Services and out-of-the-box connectivity to MapInfo Manager's data management capabilities, and v12 continues to set the standard for effective spatial data creation, editing and analysis.

What's New in v12

MapInfo Professional v12 includes powerful new algorithms for labelling lines and regions meaning users can create intelligently labelled maps faster and easier. Users now have greater control over how labels display, such as using abbreviations when labels are too long, automatic reduction of font sizes to fit labels within regions, selecting fallback options to generate rotated labels and curved labels, and the ability to drag curved labels to reposition them.

EXPECTED ROI

With MapInfo Professional, you can visualise the relationships between data and geography. Business analysts, planners, GIS professionals —even non-GIS users— can gain new insights into their markets, improve strategic decision-making and share information-rich maps and graphs.

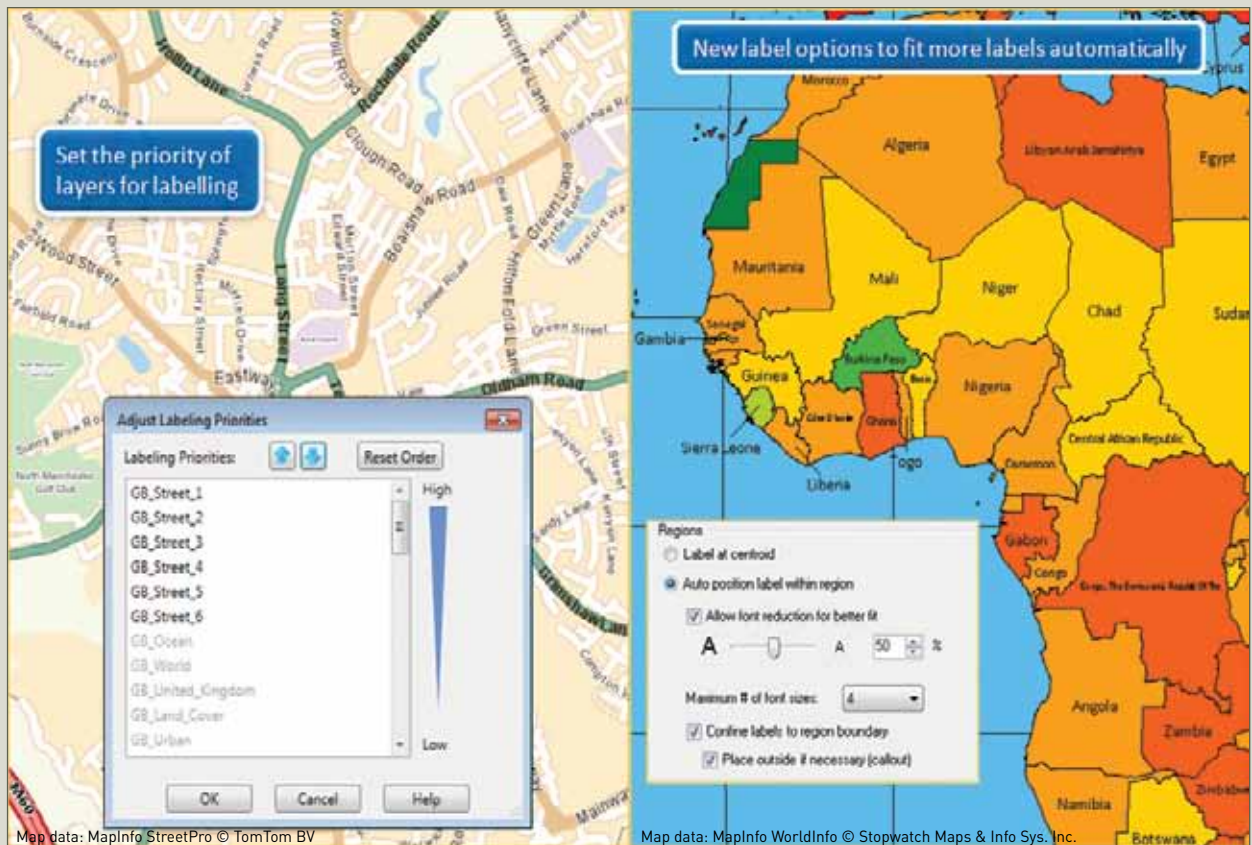
"MapInfo Professional cuts the time by 25 percent that it takes to audit our network of banking centres, along with easily mapping and analysing their geospatial measurements."

Scott Weston
AVP for Retail Distribution Analytics
Bank of America

"With Pitney Bowes Software's technology, we experienced a net return on investment of over 900 percent in the first 10 months."

Steve Wallace
Senior Strategic Planner
Florida Farm Bureau Insurance Company

MAPINFO PROFESSIONAL V12 CONTINUES TO SET THE STANDARD FOR EFFECTIVE SPATIAL DATA CREATION, EDITING AND ANALYSIS.



Some of the new labelling capabilities introduced in MapInfo Professional v12.



Numerous other improvements have been made to v12 that will allow users to work smarter, not harder.

Cartographic Output

Creating and sharing great looking map outputs is a crucial part of any GIS. MapInfo Professional v12 provides greater control over the appearance of scalebars allowing transparent backgrounds and borders, giving more space for map display. Enhancements to the Legend Designer provide control over the order of objects within a frame, automatic word wrapping for long text and resizing of style swatches for individual layers. Objects within the layout window can now be quickly aligned.

Labelling

MapInfo Professional v12 delivers substantial improvements to the creation and placement of labels, reducing the need to create custom labels. New smart algorithms allow users to place more curved labels on a map automatically. Options are also provided to fall back to rotated labels where lines are too jagged or curved labels will not fit. Curved labels can now be moved by clicking and dragging them to a new location.

New algorithms also provide intelligent placement of labels for polygons, automatically determining the best location and size for individual labels on densely labelled maps. This combined with new automatic callout placement and the ability to set the priority of labelled layers within a map provide a set of comprehensive and flexible labelling options.

Ease of Use

MapInfo Professional v12 continues to set the standard as the best combination of power and ease of use of any GIS. New tools added to MapInfo Professional, such as Compare Table Structure which allows users to compare and edit data in multiple tables simultaneously, the new PolyBuilder tool for automatically creating polygons from digitised linework and the new Quick Translator tool for getting non-native data in and out of MapInfo Professional, mean complex operations are simplified, saving valuable time.

New licence technology in MapInfo Professional v12 reduces or eliminates instances of licences becoming broken and supports the reinstallation of node-locked licences on the same computer without decrementing the licence count.

Technology Updates

With support for Windows 8 and Windows Server 2012, MapInfo Professional v12 allows organisations to make use of the latest hardware and software available. Users are now also able to read, write and create SQLite databases allowing seamless interoperability with the range of Autodesk products. The inclusion of the new Quick Translator makes getting data in and out of MapInfo Professional easier than ever. MapInfo Professional v12 also adds support for PostGIS 2.0, adds improved support for the SQL Server Geography type and support for WFS v1.1. The maximum width of an individual record in a native MapInfo table has been increased from 4,000 bytes to 63,500 bytes.

MapInfo Professional v12 Benefits

- New labelling algorithms allow more labels to be placed on a map quicker, reducing the need for detailed customisation
- Transparency settings mean the Scalebar takes up less space on the map
- Enhanced Legend Designer settings provide greater control over legend creation
- Compare Table Structure tool allows simultaneous viewing and editing of multiple tables
- Enhanced robust licence technology reduces or eliminates broken licences
- Support for SQLite databases allows seamless interaction with Autodesk products
- In-product notifications provide alerts for new available versions, licence expirations, thought leadership articles and events

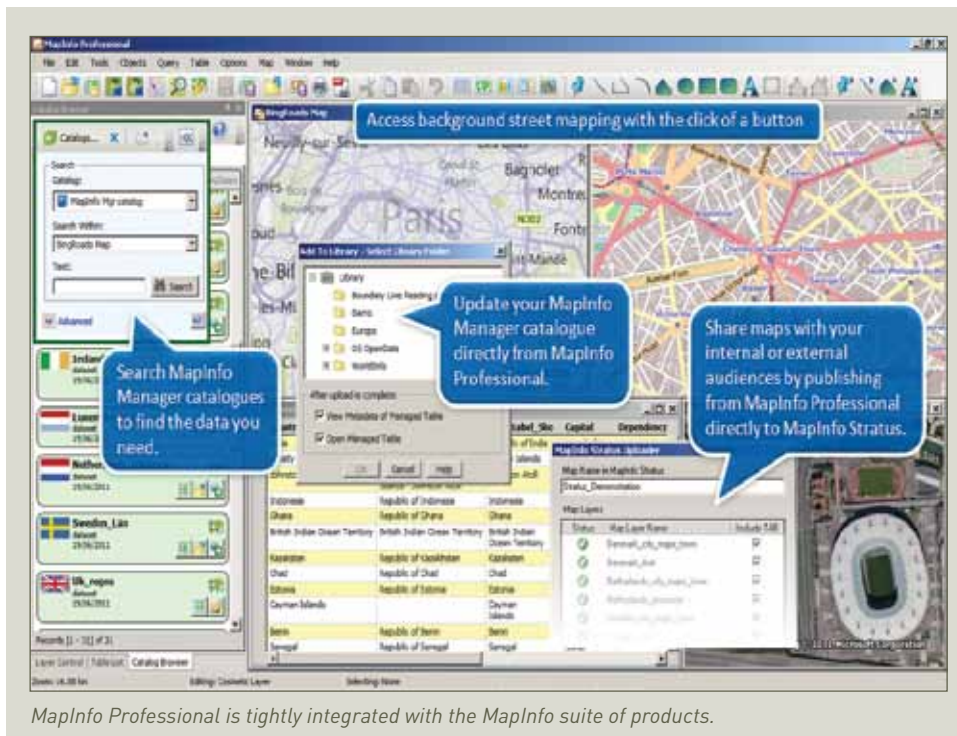
Added Value

Premium Services

MapInfo Professional v12 users can opt for additional Bing™ Maps functionality at an extra cost, gaining access to the latest road tile data with the click of a button. Within Premium Services, users can access worldwide Bing road tile services directly from their Mapper window. Users can easily overlay street tile data to enable rapid contextual awareness without extensive overheads in opening large amounts of data. If users need to find places of interest anywhere in the world, the "Move Map To" premium service enables them to enter an address, suburb, point of interest or any location, and zoom directly to that location.

The MapInfo Suite

MapInfo Professional is the cornerstone of the MapInfo suite of Location Intelligence products. Maps and data created in MapInfo Professional can be published to the web for customers or citizens to access or shared internally across the organisation using the MapInfo web mapping and enterprise GIS applications. Metadata stored in a central catalog created by MapInfo Manager, can be easily edited by nominated MapInfo Professional users, to ensure that metadata is kept current. All of this is possible with the integrated MapInfo suite of products. For more information on the MapInfo suite of Location Intelligence applications, visit www.mapinfo.com.



PRODUCT DATA SHEET

MapInfo Professional v12 SPECIFICATIONS

Operating Systems

DESKTOP

- Windows XP Professional 32-bit Service Pack 3 (SP3)
- Windows 7 Ultimate 32-bit SP1
- Windows 7 Ultimate 64-bit SP1 with 32-bit compatibility mode
- Windows 8 32-bit
- Windows 8 64-bit

SERVER

- Windows 2008 Server R2 64-bit SP1 with XenApp 6.0
- Windows 2008 Server R2 64-bit SP1
- Windows 2012 Server 64-bit

Database Servers

SPATIAL

- Microsoft SQL Server 2008 (also called SQL Server Spatial)
- Microsoft SQL Server 2012 (also called SQL Server Spatial)
- Oracle Spatial 11Gr2, 10Gr2
- PostgreSQL 9.0.3 with PostGIS 1.5
- PostgreSQL 9.x with PostGIS 2.0.x
- FDO 3.8

XY:

- Microsoft Access 2007, 2010
- Microsoft Office 2013
- Microsoft SQL Server 2005

Database Connectivity

ODBC DRIVERS

- Microsoft SQL Server 2008 Native Client v10
- Oracle ODBC Driver 11.2
- PostgreSQL ANSI ODBC driver 9.01.02

ORACLE OCI CLIENT

- Oracle Instant Client v11.2.0.2.0

FDO TOOLKIT

For more information call +44.800.840.0001 or visit us online: www.pitneybowes.co.uk/software

EUROPE/UNITED KINGDOM

+44.800.840.0001

pbsoftware.emea@pb.com

UNITED STATES

800.327.8627

pbsoftware.sales@pb.com

INDIA

+91.120.402.6000

pbsoftware.india@pb.com

ASIA PACIFIC/AUSTRALIA

+61.2.9437.6255;

pbsoftware.australia@pb.com

pbsoftware.singapore@pb.com

 **Pitney Bowes**
Software

Every connection is a new opportunity™



Pitney Bowes Software Inc. is a wholly-owned subsidiary of Pitney Bowes Inc. Pitney Bowes, the Corporate logo, MapInfo Professional, and MapInfo Manager are [registered] trademarks of Pitney Bowes Inc. or a subsidiary. All other trademarks are the property of their respective owners. © 2013 Pitney Bowes Software Inc. All rights reserved.

93525 EMEA 1305